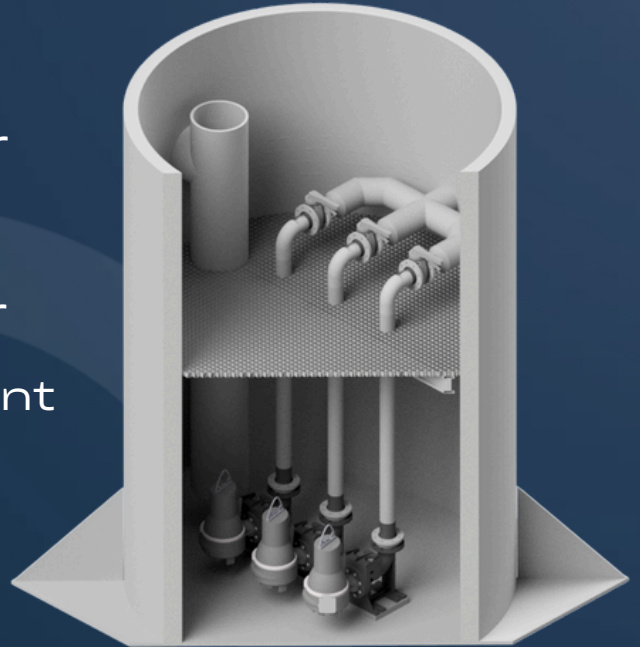


Pump wells

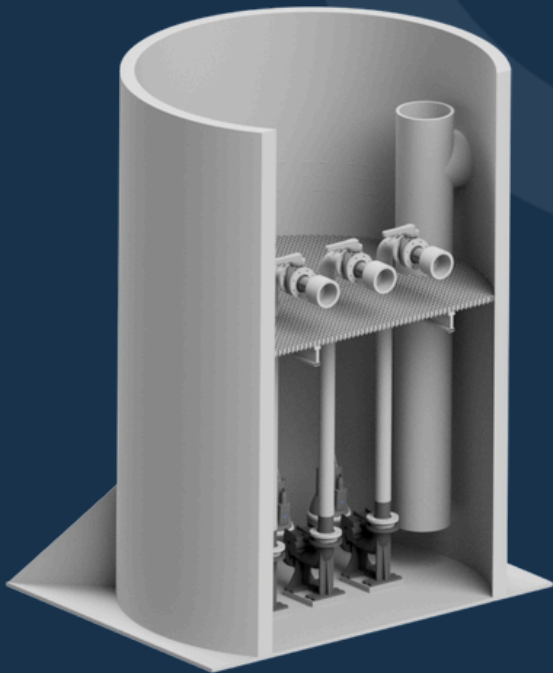
Benefits

- Prevents flooding and water accumulation
- ensures reliable wastewater and stormwater management
- Enables drainage in areas below sewer level



Specification

- Flow regulation
 - Manage fluctuating inflow and peak loads to ensure stable operation
- Lifting and transport
 - Efficiently transfers water from low-lying areas to the main sewer system
- System integration
 - Compatible with both pressure pipelines and gravity-based sewer systems
- Available in dimensions up to Ø4000



For more information, please visit our website